

# Milton St. John's CE Primary School Newsletter

Wednesday 6 December 2023

Remember to subscribe to the newsletter on our website to receive an electronic copy.

## CHRISTMAS SERVICE – ST JOHN'S CHURCH

Our Christmas Service is at St John's Church on Wednesday 13 December at 9.30am. Year 2 – 6 attend this service. Everyone is welcome to attend, although space may be limited to the last few pews at the back of church.

## FAIR AND CRAFT DAY REMINDER

FAIR AND CRAFT DAYS	
Monday 11 December	Tuesday 12 December
EYFS, Year 1 and Year 6	Year 2, Year 3, Year 4 and Year 5

## MCSP NON-SCHOOL UNIFORM/CHRISTMAS JUMPER DAY – 13.12.23

Our Year 6 Student leaders met with other student leaders from the partnership schools last week and decided to hold a non- school uniform/ Christmas jumper day on Wednesday 13 December to raise money for EMMAUS and Mossley Food bank. Donations of £2 are to be made on Schoolmoney please.

If your child does not have a Christmas jumper and would like to wear one rather than wear non-school uniform, please speak to Miss G, Mrs Galvin or Mrs Phillips on the main school gates as we have a small selection in school that can be worn.

## SCHOOL COUNCIL CHRISTMAS POSTER/DRAWING COMPETITION

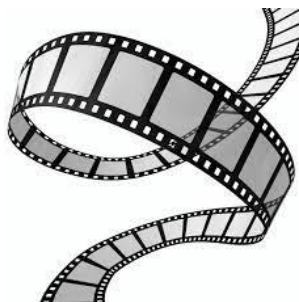
As mentioned in an email last week, the School Council have launched a Christmas poster/drawing competition. Entries need to be in on Wednesday 13 December please. The School Council will be judging the art work and there will be one winner per class.

We **S**how respect. We are **H**onest. We **I**nclude others. We **N**ever give up. We seek **E**xcellence in all we do.

## PTA NEWS

### ELFRIDGES

The closing date for orders for Elfridges has now passed. Schoolmoney has been updated and parents now need to log in and pay for gifts ordered. This must be done by 10 December. Due to the organisation needed to coordinate the event, we cannot accept late orders or payments. If payments are not made, unfortunately your child will not be able to take part in Elfridges.



### FILM DAY

The PTA are very keen to do things for the children and will be having a film day on the last day of term. The children are able to come into school in non-school uniform/ Christmas jumpers and the PTA will be providing the snacks and treats for the children. Some classes will still have PE on this day, so please ensure the children wear appropriate footwear so they can still take part in PE.

### CHRISTMAS TREE FESTIVAL

We will be sponsoring and decorating a Christmas Tree at Mossley Community Centre and St John's Christmas Tree festival which runs from Friday 8 – Sunday 10 December.

## CHRISTMAS TREE FESTIVAL

**Mossley Community Centre and  
St John's Church, Roughtown, Mossley**

**Friday 8th 4pm -7pm DECEMBER**

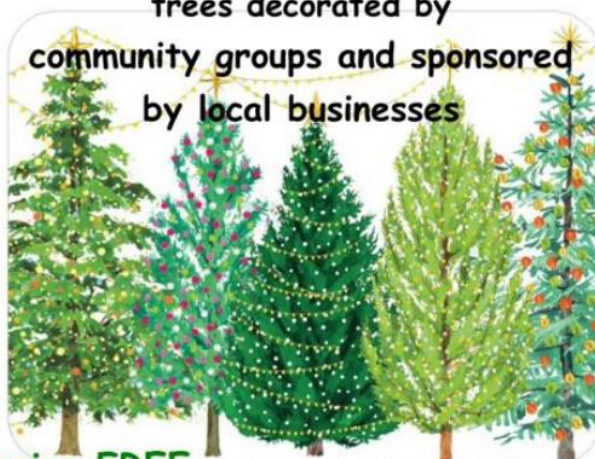
**Saturday 9th 3pm -8pm**

**& Sunday 10th 11am -3pm**

**(following the Sunday service),**

**A winter wonderland of festively decorated twinkling  
trees decorated by**

**community groups and sponsored  
by local businesses**



**Admission FREE**, DONATIONS ALWAYS GRATEFULLY RECEIVED

**Seasonal refreshments and music throughout this event**

**Partnership between St John's Church and Mossley Community centre**

Registered Charity NO: 1140980 Reg Co: 7457867

## HELP US WITH FREE DONATIONS WHEN SHOPPING ONLINE

Just reminding you that Milton St John's CE Primary School are registered with easyfundraising, which means you can raise FREE donations for us every time you shop online. Over 7,000 brands will donate to us when you use easyfundraising to shop with them – at no extra cost to yourself! Amazon, Tesco, Argos and Groupon are some of the brands that you are able to shop at and get them to donate to us.

These donations really mount up and make a BIG difference to us, so we'd really appreciate it if you could take a moment to sign up and support us. It's completely FREE and only takes a moment.

You can find our easyfundraising page at

[https://www.easyfundraising.org.uk/causes/miltonstjohnsprimary/?utm\\_campaign=raise-more&utm\\_medium=email&utm\\_content=rm-gs-e1](https://www.easyfundraising.org.uk/causes/miltonstjohnsprimary/?utm_campaign=raise-more&utm_medium=email&utm_content=rm-gs-e1)

To find out more about how it works click on the link below.

[https://www.easyfundraising.org.uk/how-it-works/?efr\\_source=website&efr\\_medium=easyfundraising&efr\\_campaign=header-navigation](https://www.easyfundraising.org.uk/how-it-works/?efr_source=website&efr_medium=easyfundraising&efr_campaign=header-navigation)

**So far, with 44 supporters, £432.90 has been raised since we started! Thank you to those that have taken the time to sign up.**



## POPPY APPEAL

Thank you to everyone who donated to this year's Poppy appeal. We raised £236.81 for this worthy cause.

## ABSENCES AROUND A SCHOOL HOLIDAY

Please can we remind parents that we are unable to authorise any absences around a school holiday without medical evidence. If you are going on holiday, please complete an absence request form (available at the school office). We do ask that four weeks' notice is given. As you will be aware, children are very honest (which we encourage as part of our SHINE ethos) and will tell us on their return. Please consider the implications and be honest about time off in term time.

## 2024 RECEPTION APPLICATIONS

The online portal is now open for applications for Reception September 2024. The closing date for submitting a Reception 2024 school application is 15 January 2024. (Applications submitted after this date will be processed as a 'late' application)

Please visit <https://www.tameside.gov.uk/admissions> for more information.

We **S**how respect. We are **H**onest. We **I**nclude others. We **N**ever give up. We seek **E**xcellence in all we do.

## DIARY DATES

Tues 12 Dec 2023	Christmas Dinner day
Wed 13 Dec 2023	PTA Elfridges and Christmas jumper/non-school uniform day
Thurs 14 Dec 2023	KS2 Panto trip
Fri 15 Dec 2023	PTA Film day—children can wear non-school uniform/Christmas jumper
Tues 2 Jan 2024	Inset Day
Wed 3 Jan 2024	Children return to school
Mon 15 Jan 2024	Deadline for Primary School applications
Fri 14 June – Mon 17 June 2024	Year 6 Kingswood Residential trip
Fri 19 July 2024	Year 6 Leavers' Party

## COMMUNITY NEWS



**MANCHESTER CATHEDRAL**

**WEDNESDAY 6TH DECEMBER 2023**

Doors open at 7pm | Concert starts at 7.20pm

<b>ADULTS</b> £10*/£14	<b>CONCESSIONS</b> £6*/£10	Concessions = those with visual impairments, disabilities, students, children and OAP
<b>GUIDES/CARERS</b> FREE!	<b>FAMILIES</b> £25*/£30	Family tickets = 1 adult and 3 children or 2 adults and 2 children

\*Early bird pricing will end **6th November**

**FEATURING**

Dave Steele - The Blind Poet  
Denise Leigh & Stefan Andrusyschyn  
Svitoch Ukrainian Choir  
Leo Hicks  
Henshaws Children & Young People Choir

**BOOK NOW:**

[henshaws.org.uk](https://henshaws.org.uk)    0300 222 5555

**PROUDLY SPONSORED BY:**






Henshaws society for blind people, charity number 221888

